

## Test Report

No. 2042730/EC

Date : Nov 18 2005

Page 1 of 2

ECS INC.  
1105 S. RIDGEVIEW  
OLATHE, KS 66062

Report on the submitted sample said to be THRU HOLE CRYSTAL.

SGS Job No. : 1913722  
Client Part No. : ECS-3X8X (ECS-.327-12.5-8X)  
Supplier / Manufacturer : ECS INC.  
Country of Origin : CHINA  
Sample Receiving Date : NOV 12 2005  
Testing Period : NOV 12 - 17 2005

Test Requested : 1) To determine the Cadmium content in the submitted sample.  
2) To determine the Lead content in the submitted sample.  
3) To determine the Mercury content in the submitted sample.  
4) To determine the Hexavalent Chromium content on the submitted sample.

Test Method : 1-3) With reference to EPA Method 3051/ 3052.  
Analysis was performed by Inductively Coupled Argon Plasma - Atomic Emission Spectrometry (ICP-AES) or Atomic Absorption Spectrometry.  
4) With reference to EPA Method 3060A & 7196A.  
The sample was alkaline digested by using EPA Method 3060A, and then analyzed by using Colorimetric method 7196A.

Test Results	Test Item	1	Detection Limit
	1) Cadmium (Cd) Content	ND	2 ppm
	2) Lead (Pb) Content	14 ppm	2 ppm
	3) Mercury (Hg) Content	ND	2 ppm
	4) Hexavalent Chromium (Cr 6+) Content	ND	2 ppm

(Results shown are of the total weight of samples)

Notes : ppm = mg/kg  
ND = Not Detected  
Not detected is reported when the reading is less than detection limit value

### Sample Description:

1. Silvery Metal w/ Black Printing w/ Semi-Transparent Crystal w/ Transparent Glass w/ Blue Printing w/ Silvery Chip

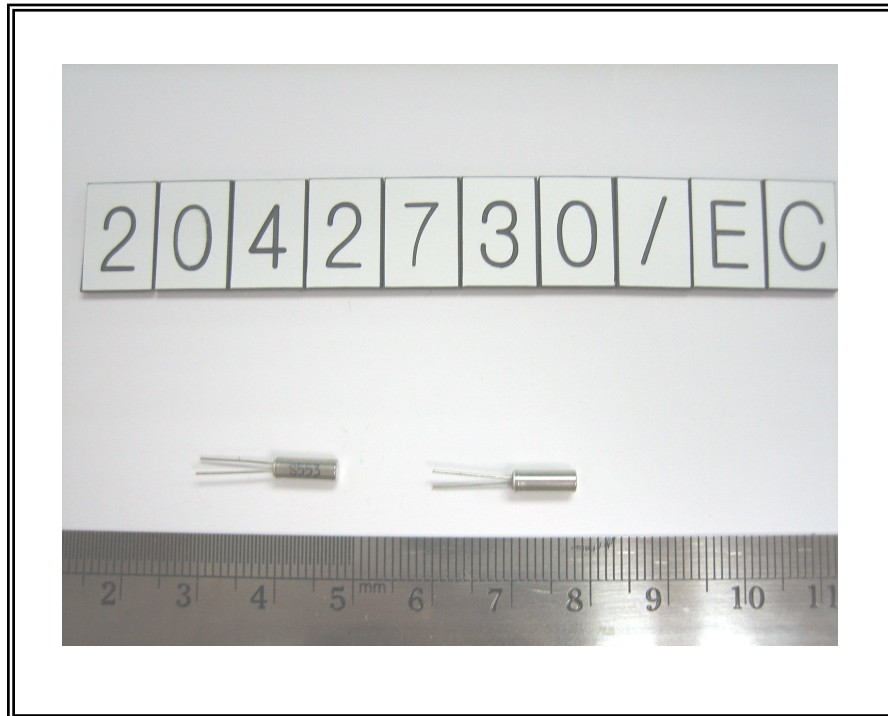
Signed for and on behalf of  
SGS Hong Kong Ltd



Ho Ka Ting, Family  
Laboratory Executive

This Test Report is issued by the Company subject to its General Conditions of Service printed overleaf. Attention is drawn to the limitations of liability, indemnification and jurisdictional issues defined therein. The results shown in this test report refer only to the sample(s) tested unless otherwise stated. This Test Report cannot be reproduced, except in full, without prior written permission of the Company.

**PHOTO APPENDIX**



SGS authenticate the photo on original report only

\*\*\* End of Report \*\*\*